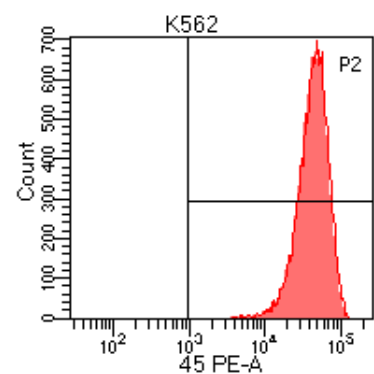
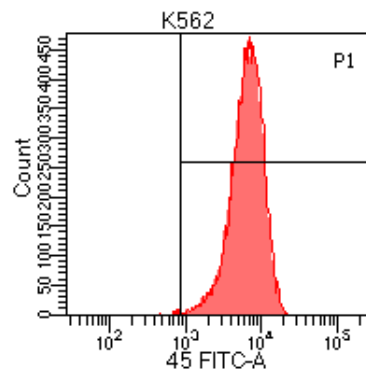
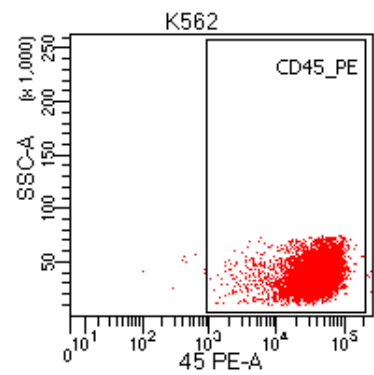
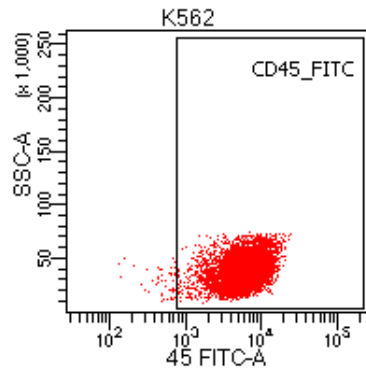
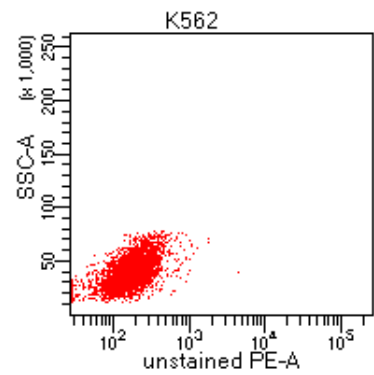
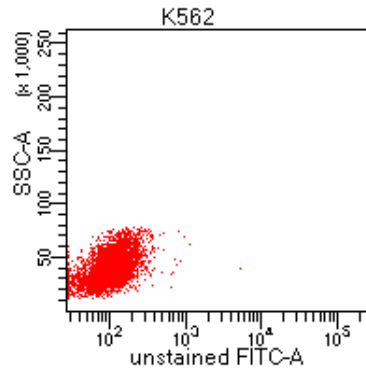
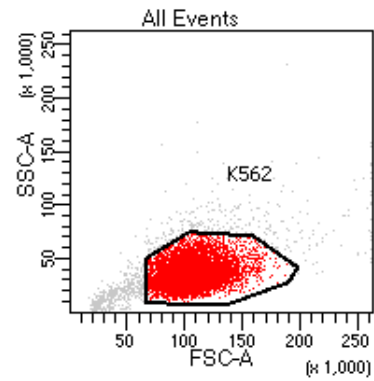
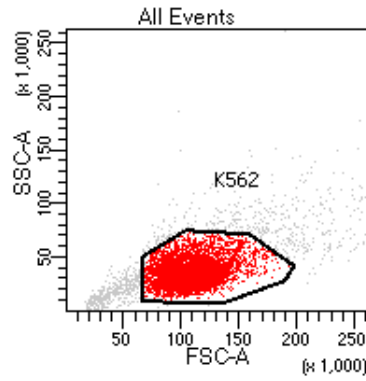


**FACSFlow
Sheath Fluid
(cat.No 342003)**



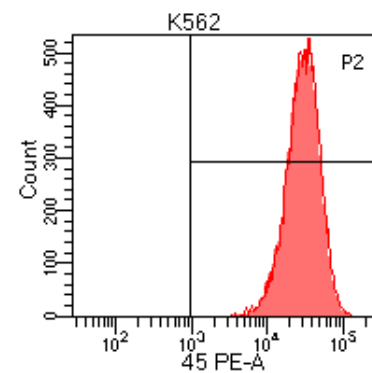
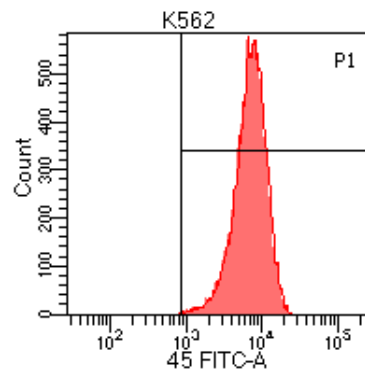
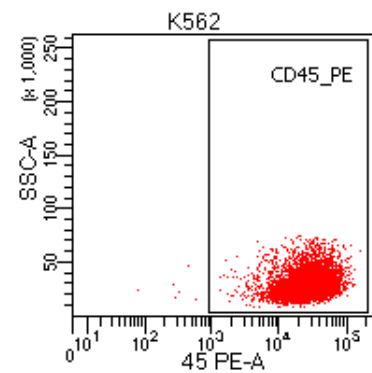
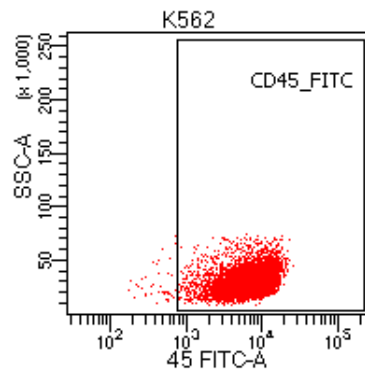
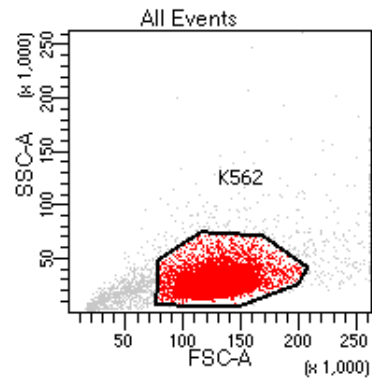
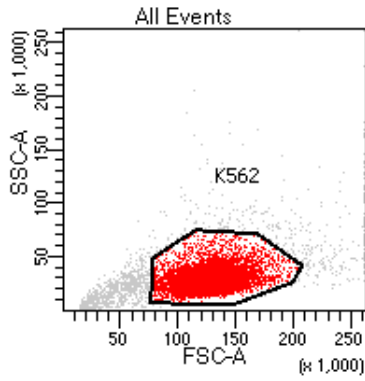
Tube: 45 FITC /FACSFlow

Population	#Events	%Parent	%Total
All Events	17,776	####	100.0
K562	14,964	84.2	84.2
CD45_FITC	14,866	99.3	83.6
P1	14,844	99.2	83.5

Tube: 45 PE /FACSFlow

Population	#Events	%Parent	%Total
All Events	22,583	####	100.0
K562	20,166	89.3	89.3
CD45_PE	20,144	99.9	89.2
P2	20,150	99.9	89.2

Проточная жидкость InoFlow (Cat. No IG-IF-20)



Tube: CD45 FITC /InoFlow

Population	#Events	%Parent	%Total
All Events	20,000	####	100.0
K562	17,657	88.3	88.3
CD45_FITC	17,570	99.5	87.8
P1	17,543	99.4	87.7

Tube: CD45 PE /InoFlow

Population	#Events	%Parent	%Total
All Events	20,000	####	100.0
K562	17,816	89.1	89.1
CD45_PE	17,799	99.9	89.0
P2	17,797	99.9	89.0